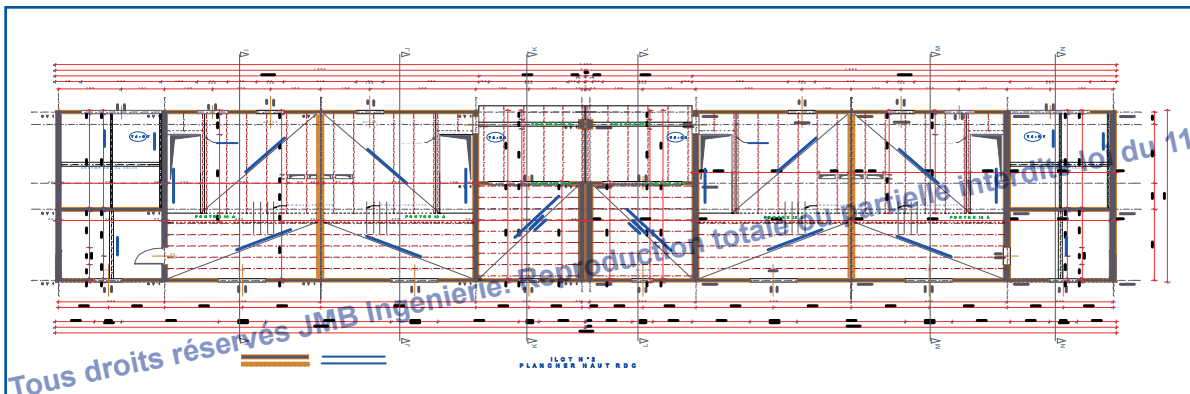


# LOGEMENTS & RÉHABILITATIONS

## OPÉRATIONS DU LOGIS FAMILIAL VAROIS

- Village REYNIER SIX FOURS LES PLAGES
- Communes de la CADIÈRE D'AZUR, VINS, CORRENS, BRIGNOLES, etc.



## OPÉRATIONS DE RÉHABILITATION LE LOGIS FAMILIAL VAROIS (PLUS DE 250 LOGEMENTS)

- Commune de CARCÉS, BESSE SUR ISSOLE, LE VAL, BRIGNOLES, NÉOULES, LA ROQUEBRUSSANNE, SIX FOURS, SANARY,...

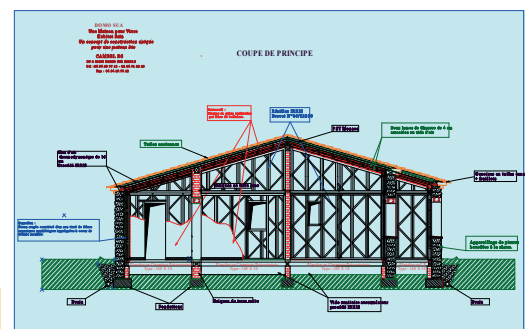
## HABITAT SAIN

### TERRE CUITE ET CRUE, PIERRES

- Construction en briques de terre crue ou cuite, briques de terre
- Matériaux naturels : Fermacell, Canosmose, Béton de canobiote



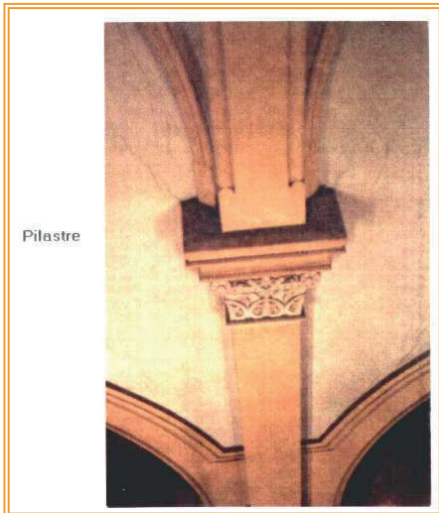
Presse à brique



Coopération  
Décentralisée avec 5 Villages du Sahel  
dans La Région de SANCE BURKINA FASO

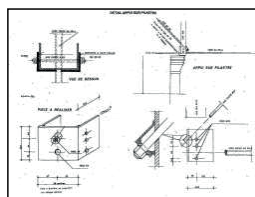
## LOGEMENTS & RÉHABILITATIONS (SUITE)

### CONSERVATION DU PATRIMOINE

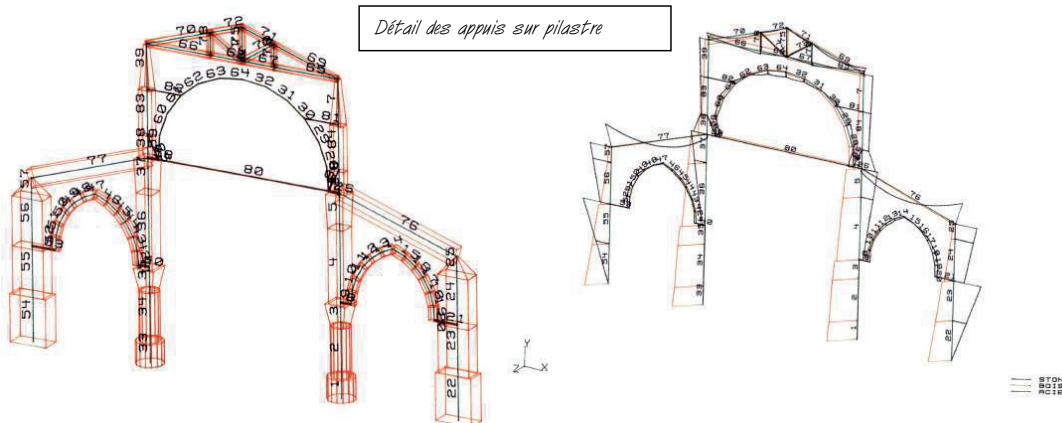


Tous droits réservés JMB Ingenierie. Reproduction totale ou partielle interdite loi du 11 mars 1957.

Modélisation des inerties des éléments de voûte et arcs par Robot.

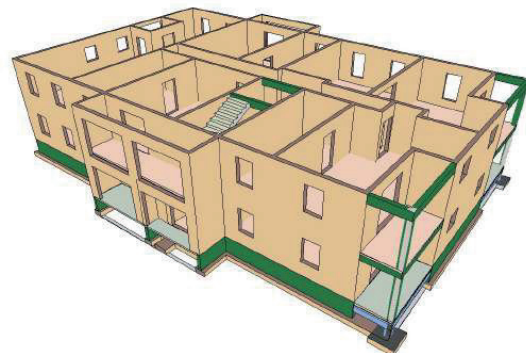
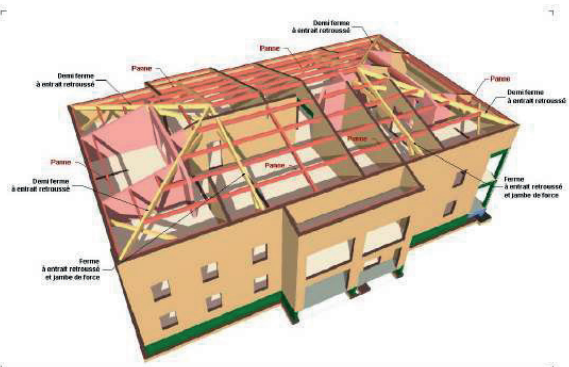
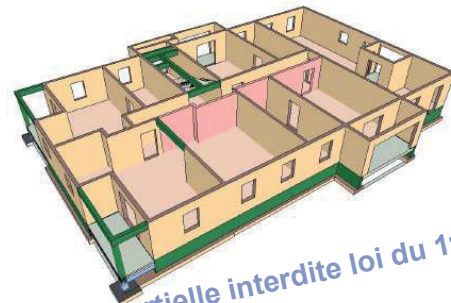
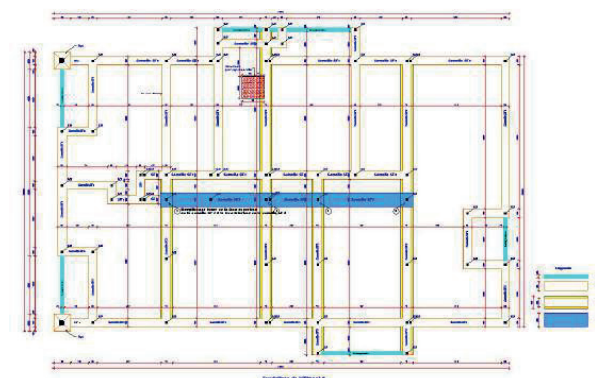
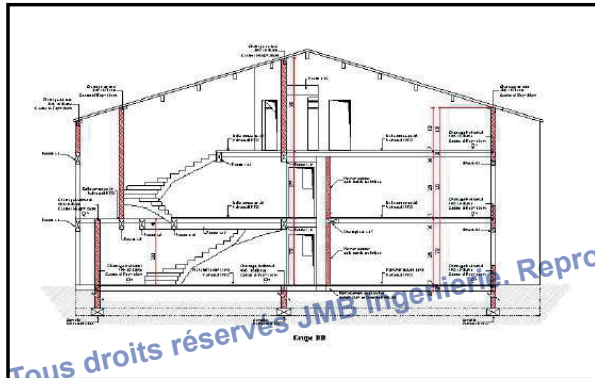
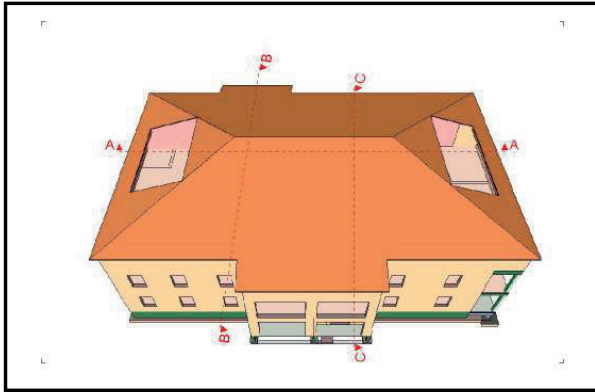


Calcul de l'ensemble des efforts, contraintes et déformations avant et après renforcement sous combinaisons des sollicitations (poids propre, vent et neige)



## LOGEMENTS & RÉHABILITATIONS (SUITE)

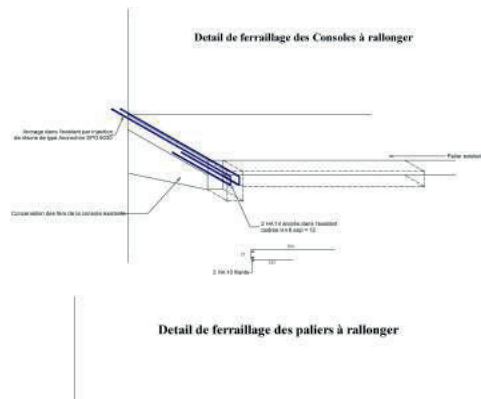
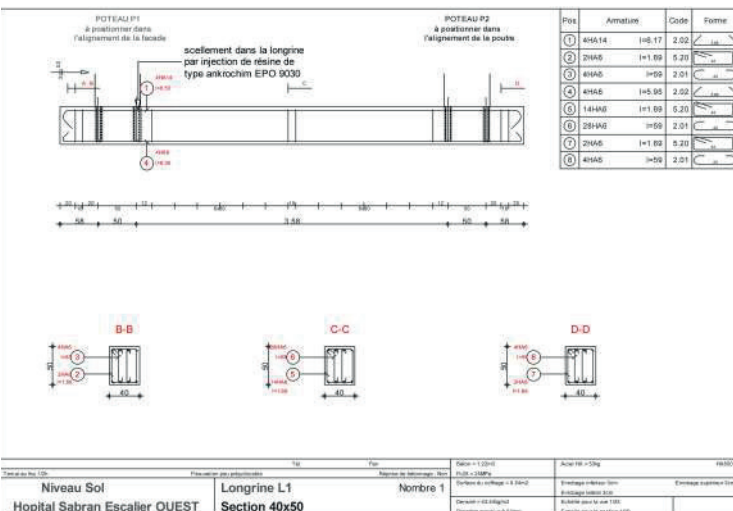
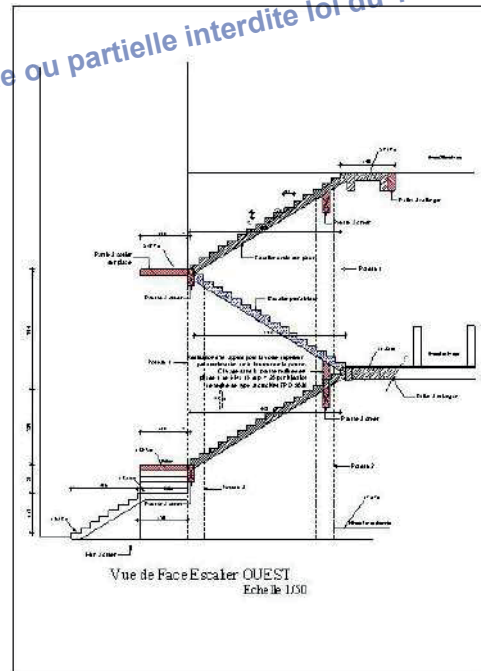
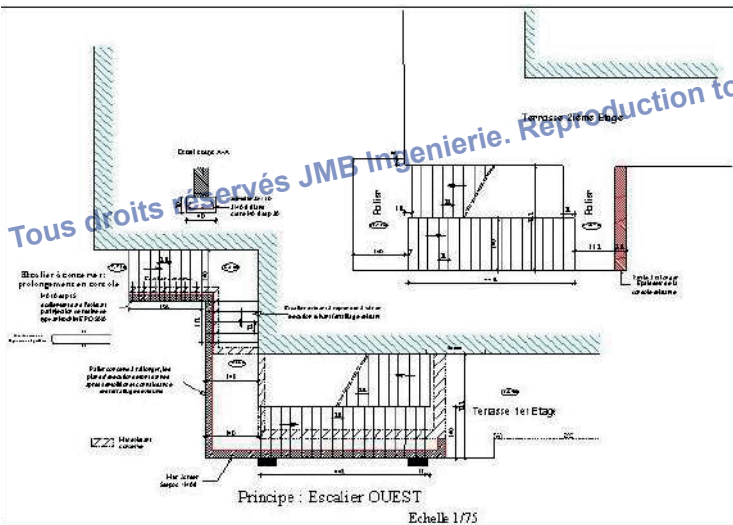
EIFFAGE IMMOBILIER - CONSTRUCTION DE 72 LOGEMENTS - LES BASTIDES DU BEAUSSET - (C..O. : 6 870 000 €)



Tous droits réservés JMB Ingénierie. Reproduction totale ou partielle interdite loi du 11 mars 1957.

## LOGEMENTS & RÉHABILITATIONS (SUITE)

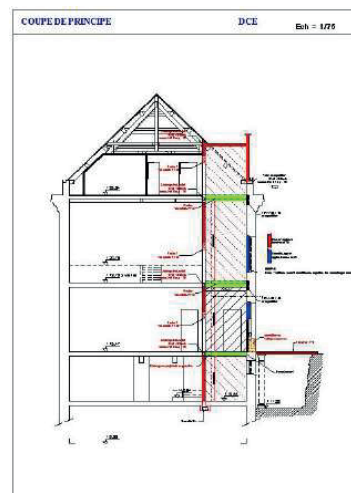
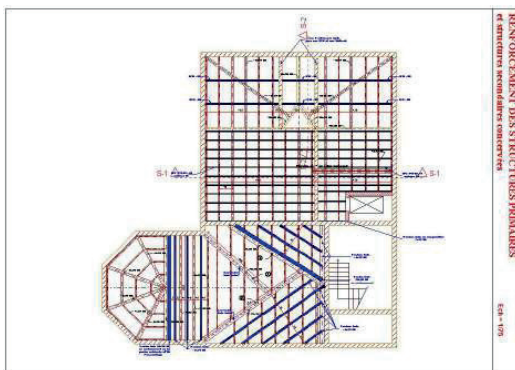
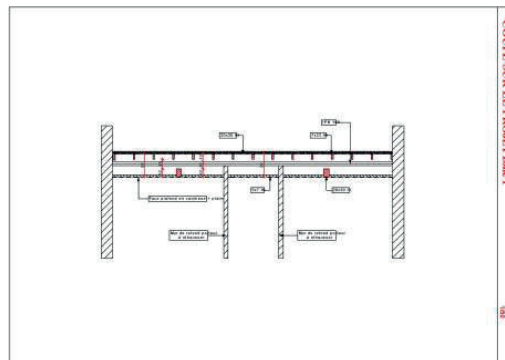
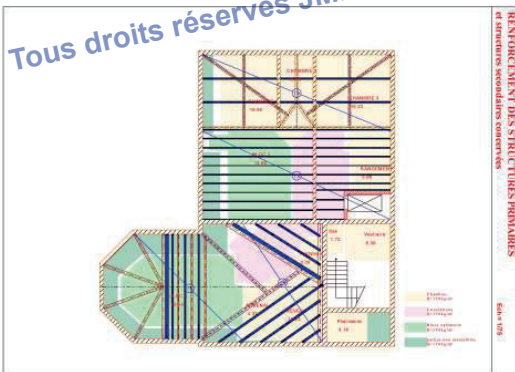
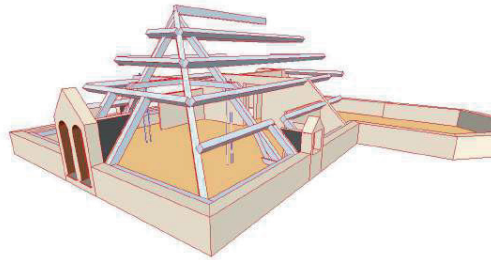
### MISE EN CONFORMITÉ DE L'HÔPITAL RENÉ SABRAN



Tous droits réservés JMB Ingenierie. Reproduction totale ou partielle interdite loi du 11 mars 1957.

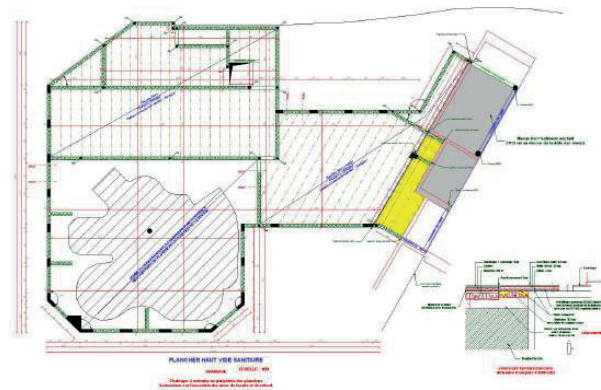
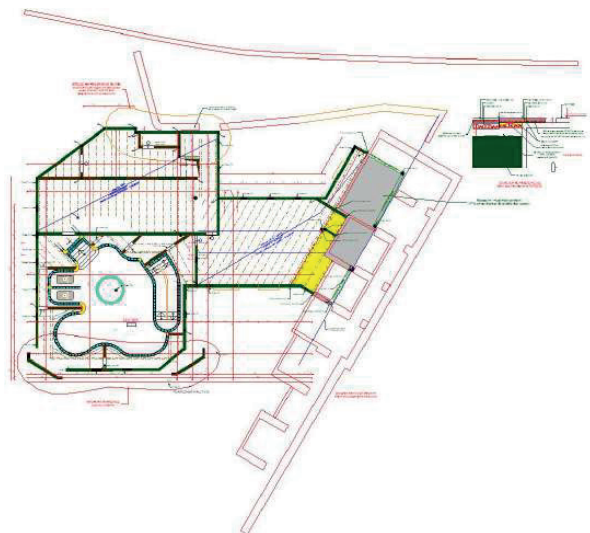
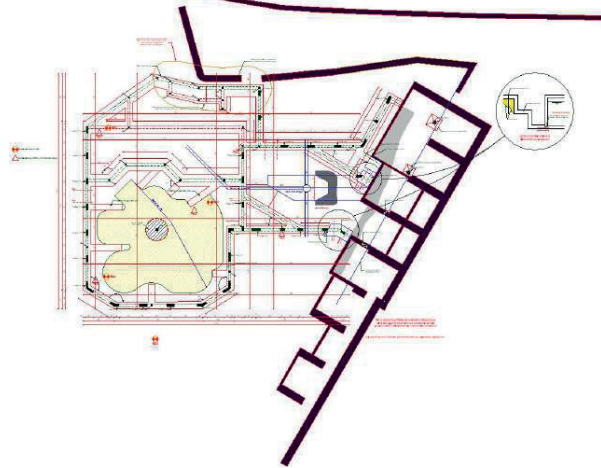
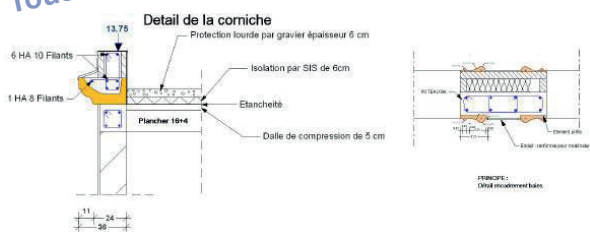
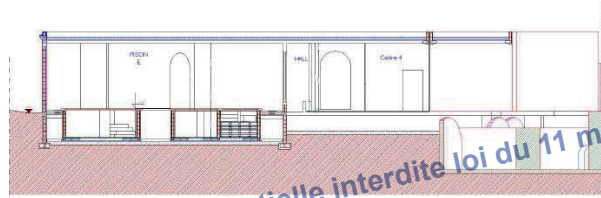
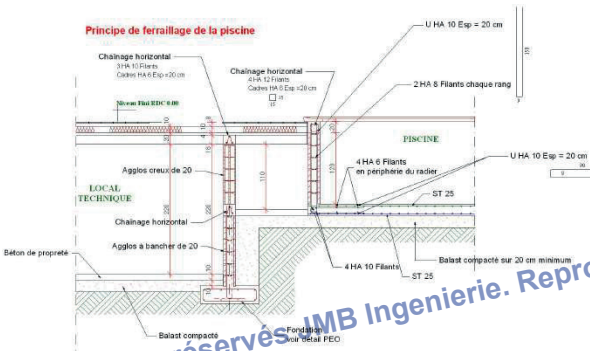
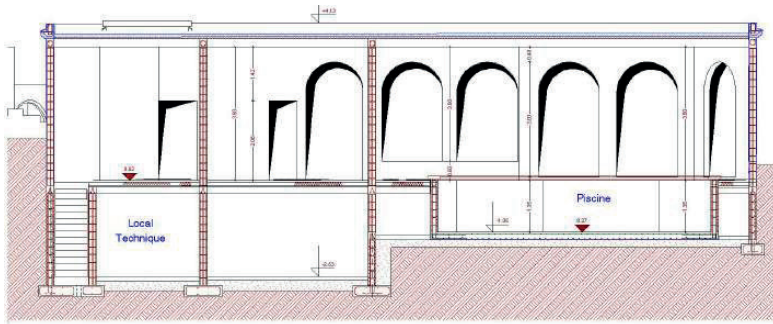
## LOGEMENTS & RÉHABILITATIONS (SUITE)

CRÉATION DE BLOCS OPÉRATOIRES ET SALLES DE REPOS CLINIQUE CHÂTEAU BERGER À MARSEILLE 950 M<sup>2</sup>



## LOGEMENTS & RÉHABILITATIONS (SUITE)

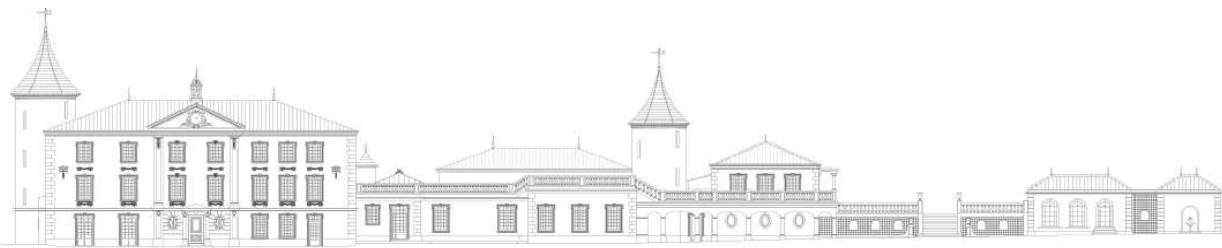
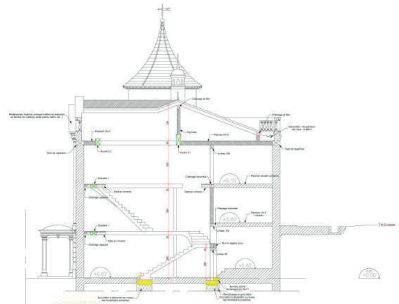
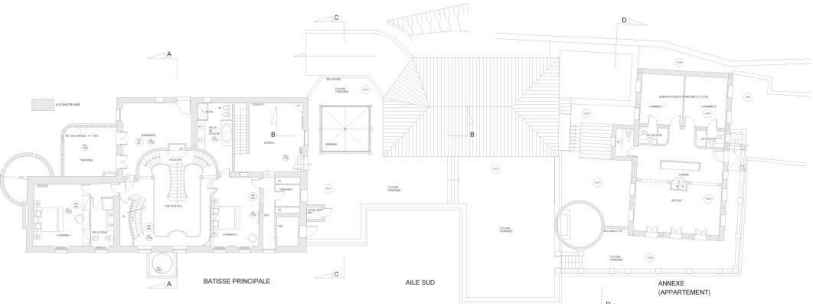
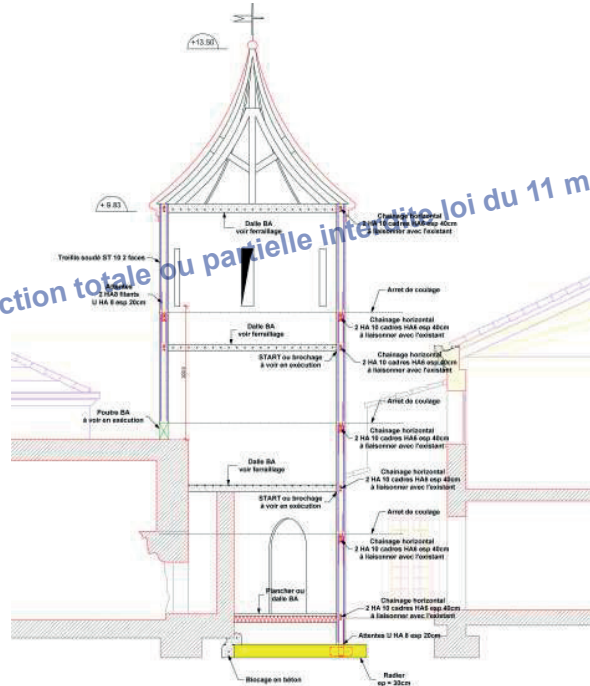
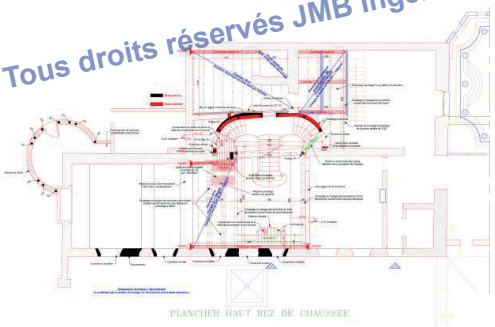
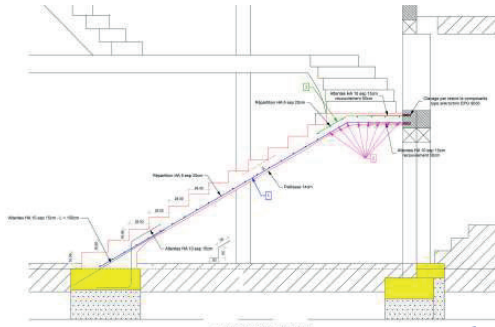
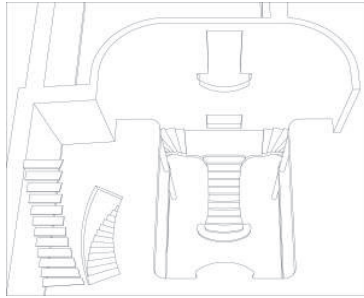
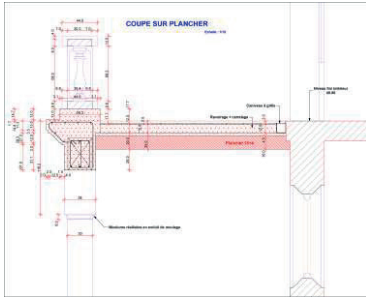
EXTENSION DE LA CLINIQUE CHÂTEAU BERGER À MARSEILLE - CENTRE DE THALASSOTHÉRAPIE 650 M<sup>2</sup>



Tous droits réservés JMB Ingenierie. Reproduction totale ou partielle interdite loi du 11 mars 1957.

## LOGEMENTS & RÉHABILITATIONS (SUITE)

### DOMAINE LE GRAND BAOU COMMUNE DU VAL



FACADE OUEST

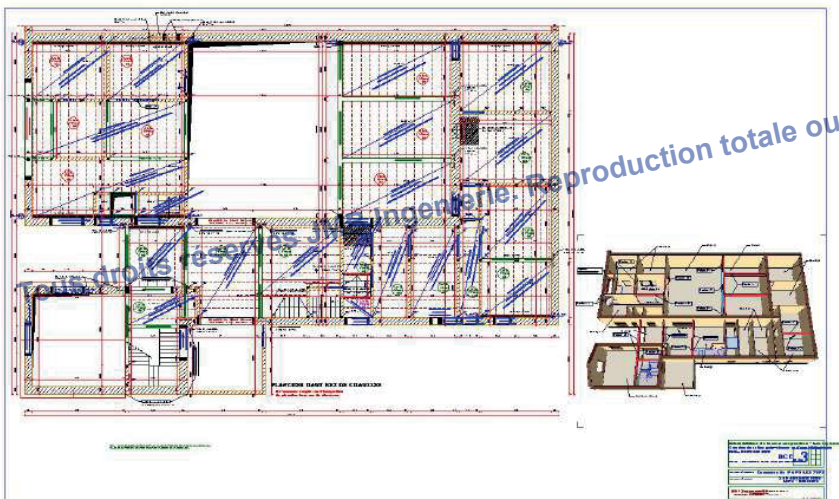
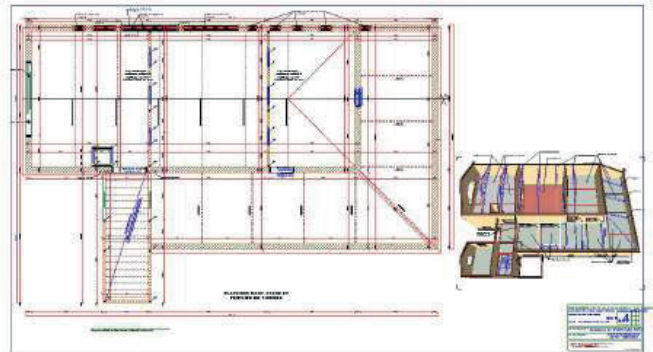
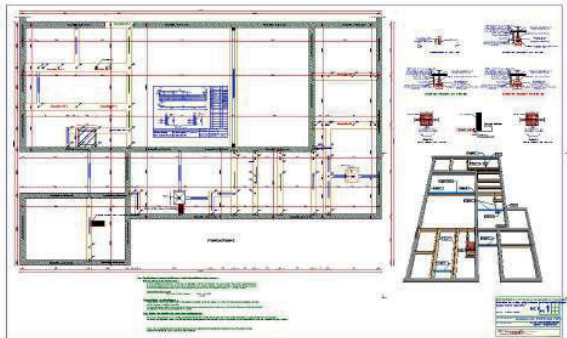
Tous droits réservés JMB Ingenierie. Reproduction totale ou partielle interdite loi du 11 mars 1957.





## LOGEMENTS & RÉHABILITATIONS (SUITE)

### LA CAVE COOPÉRATIVE DE NANS LES PINS / SALLES POLYVALENTES ET BIBLIOTHÈQUE

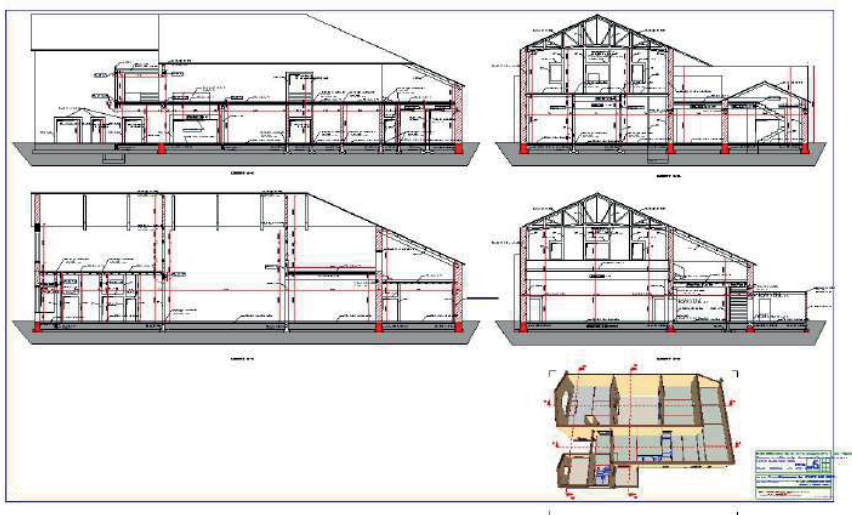


Reproduction totale ou partielle interdite loi du 11 mars 1957.

PROFONDITEUR	PROFONDITEUR
1.000	1.000
2.000	2.000
3.000	3.000
4.000	4.000
5.000	5.000
6.000	6.000
7.000	7.000
8.000	8.000
9.000	9.000
10.000	10.000
11.000	11.000
12.000	12.000
13.000	13.000
14.000	14.000
15.000	15.000
16.000	16.000
17.000	17.000
18.000	18.000
19.000	19.000
20.000	20.000
21.000	21.000
22.000	22.000
23.000	23.000
24.000	24.000
25.000	25.000
26.000	26.000
27.000	27.000
28.000	28.000
29.000	29.000
30.000	30.000
31.000	31.000
32.000	32.000
33.000	33.000
34.000	34.000
35.000	35.000
36.000	36.000
37.000	37.000
38.000	38.000
39.000	39.000
40.000	40.000
41.000	41.000
42.000	42.000
43.000	43.000
44.000	44.000
45.000	45.000
46.000	46.000
47.000	47.000
48.000	48.000
49.000	49.000
50.000	50.000

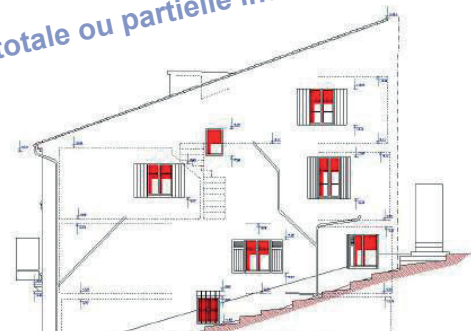
Niveau standard Poutre Longrine : P1 Nombre 1  
Nans Longrine Poutre Section 30x140

Page 1/1

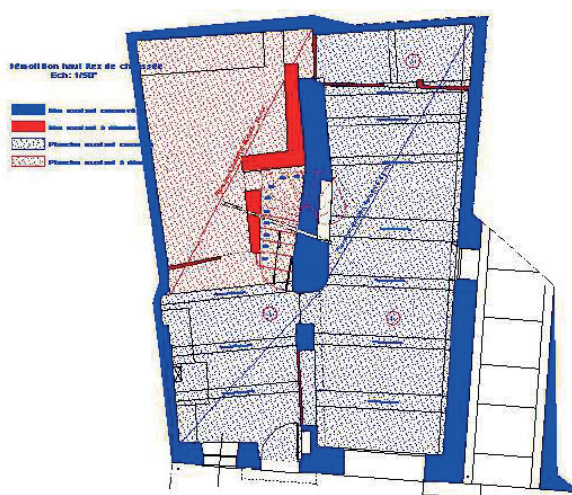
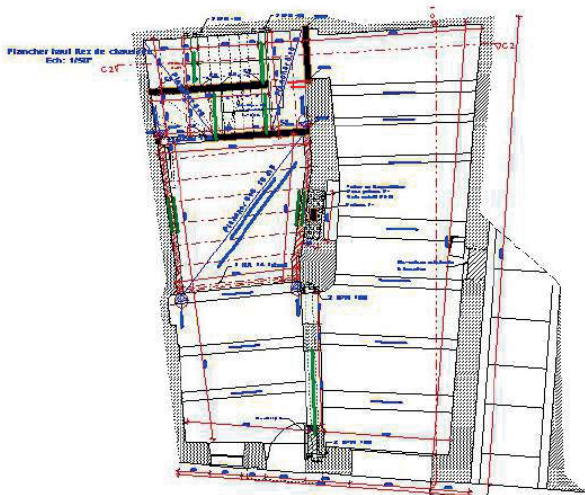


## LOGEMENTS & RÉHABILITATIONS (SUITE)

### HÔTEL DAUPHIN - CHAMBRES D'ÉTUDIANTS - MAIRIE DE MONTMEYAN

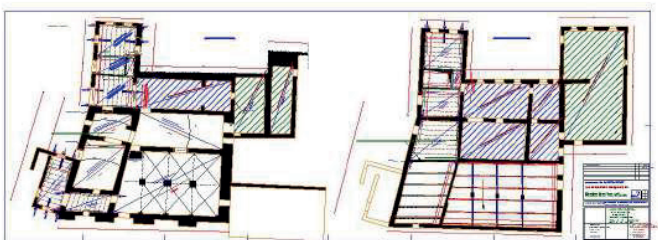
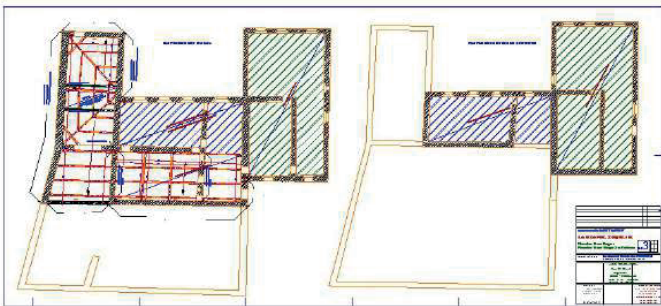


Tous droits réservés JMB Ingénierie. Reproduction totale ou partielle interdite loi du 11 mars 1957.



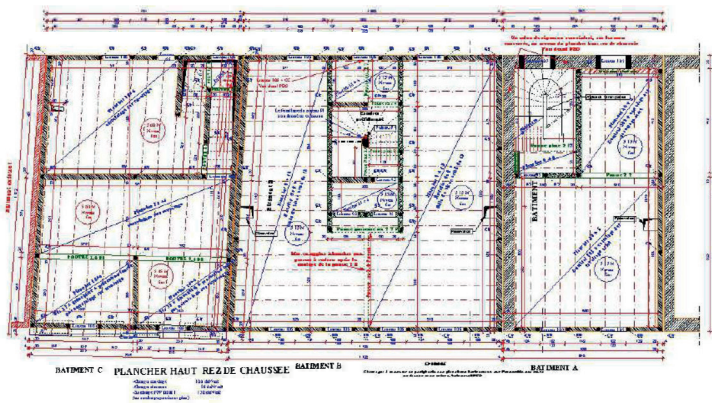
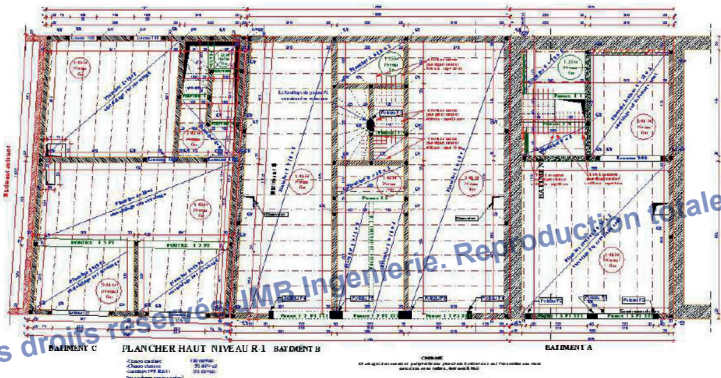
## LOGEMENTS & RÉHABILITATIONS (SUITE)

DOMAINE DE LA GRANDE ROQUETTE - COMMUNE DE MONTMEYAN - GÎTES RURAUX 1550 M<sup>2</sup>



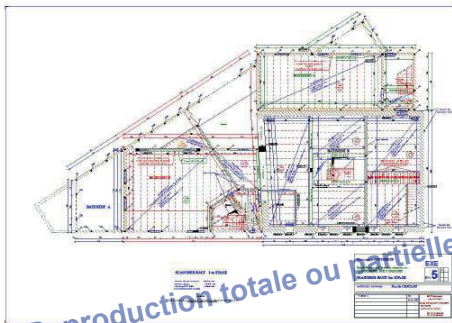
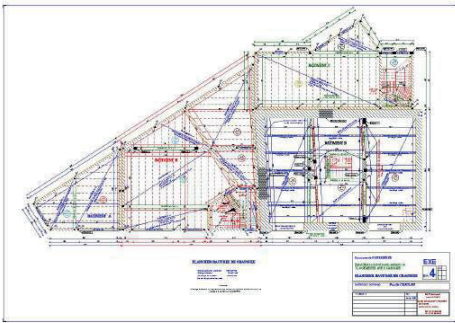
## LOGEMENTS & RÉHABILITATIONS (SUITE)

2 LOGEMENTS ET 6 LOGEMENTS NEUFS - SCI LE CLOS - COMMUNE DE FUVEAU



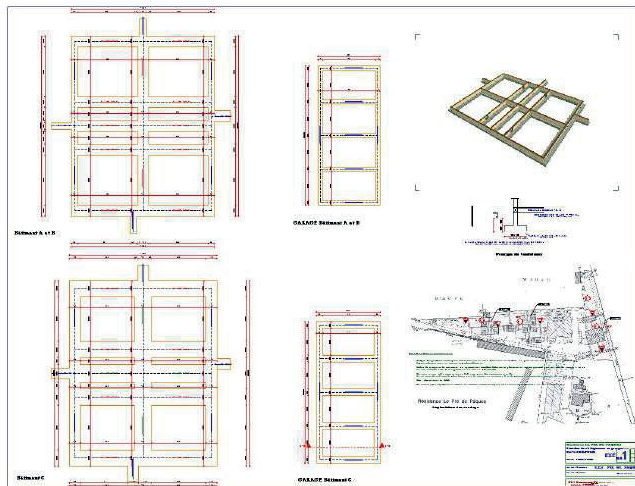
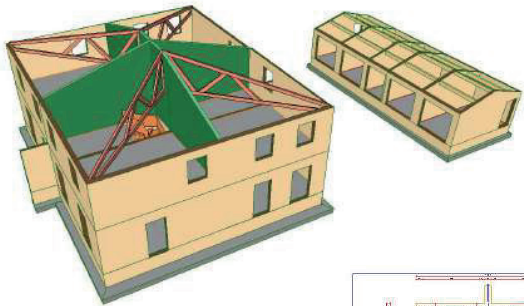
## LOGEMENTS & RÉHABILITATIONS (SUITE)

### 7 LOGEMENTS COMMUNE DE POURIERES - SCI CHAULAN



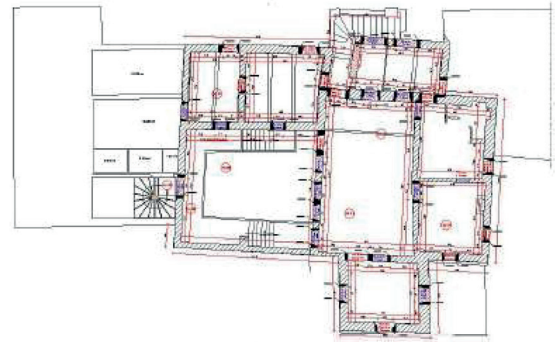
SC - droits réservés JMB Ingenierie. Reproduction totale ou partielle interdite loi du 11 mars 1957.

### SC - PRÉS DE PAQUES - 12 LOGEMENTS - COMMUNE DE BRIGNOLES

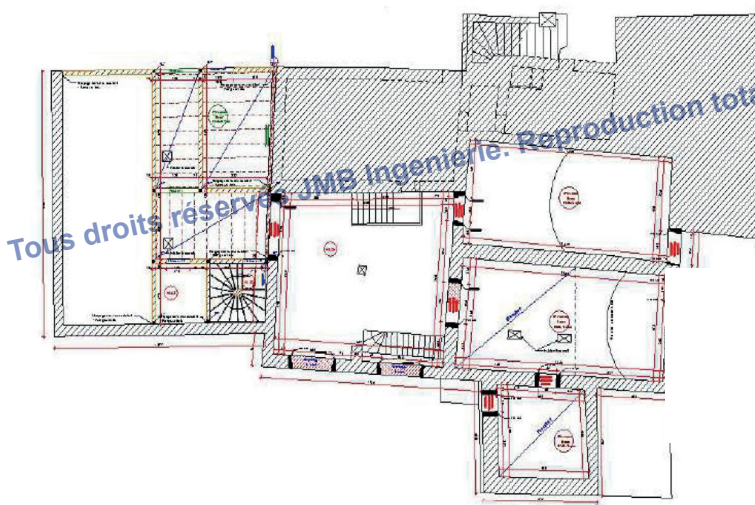


## LOGEMENTS & RÉHABILITATIONS (SUITE)

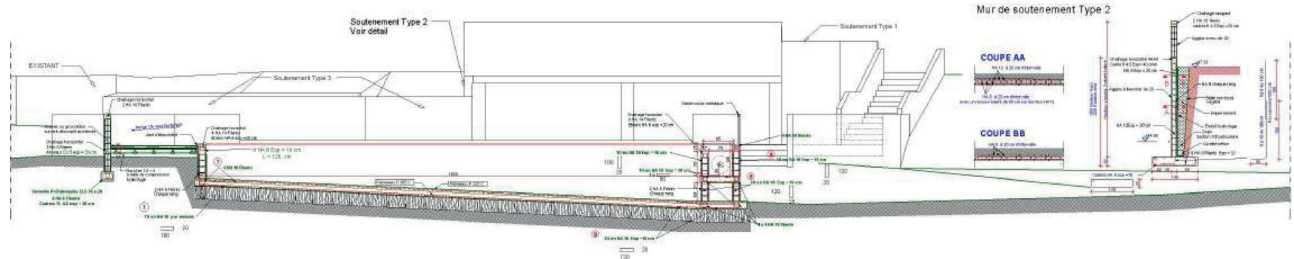
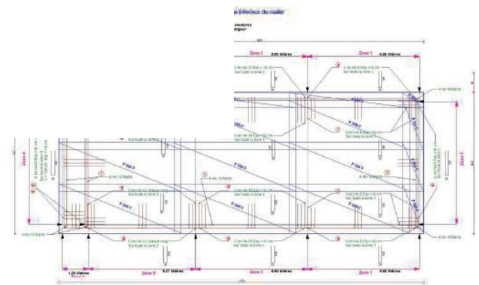
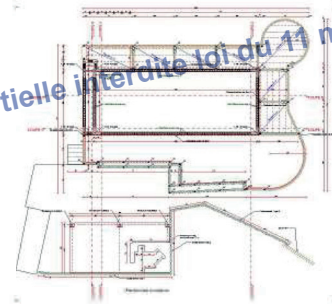
DOMAINE DU PEYROURIER - GÎTES RURAUX 1200 M<sup>2</sup> - COMPLEXE PISCINE



Plancher haut R+1 et principe de laiture



Plancher haut R-1

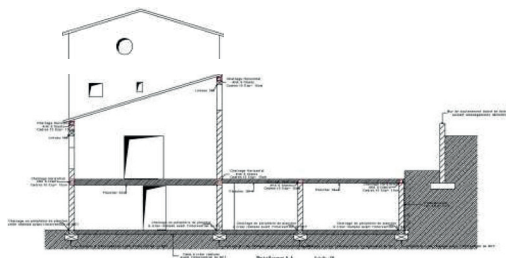
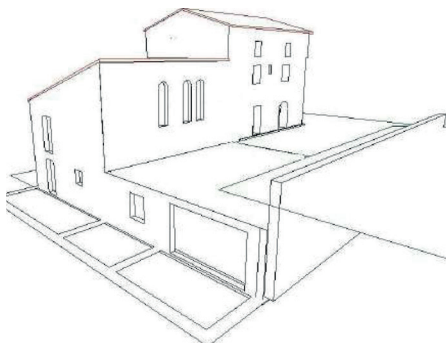
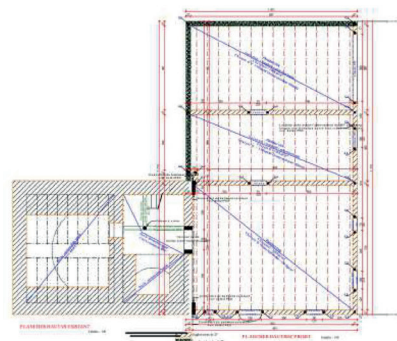
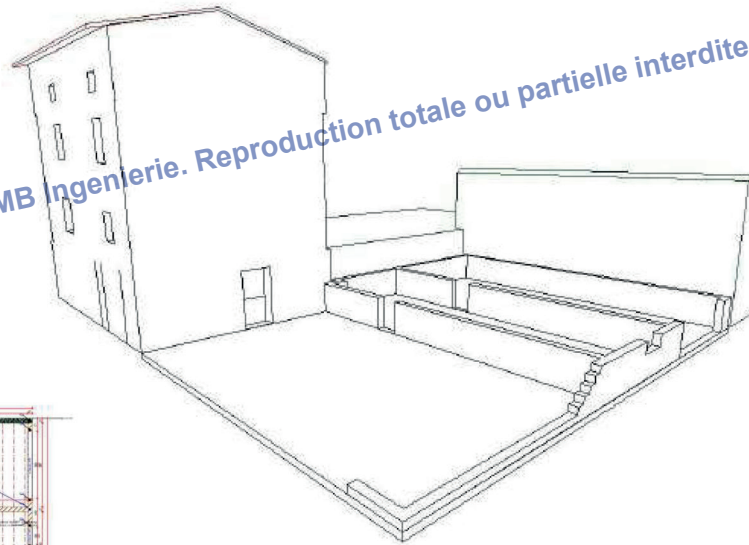


COUPE 5  
Coupe longitudinale

Tous droits réservés JMB Ingénierie. Reproduction totale ou partielle interdite loi du 11 mars 1957.

## LOGEMENTS & RÉHABILITATIONS (SUITE)

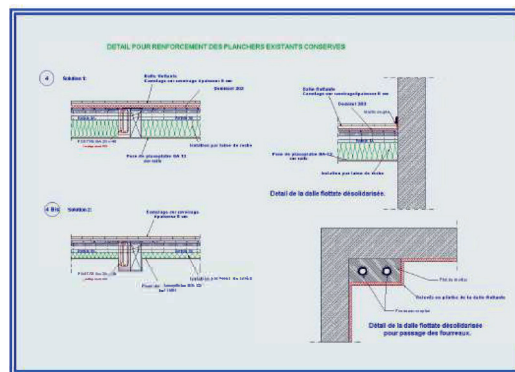
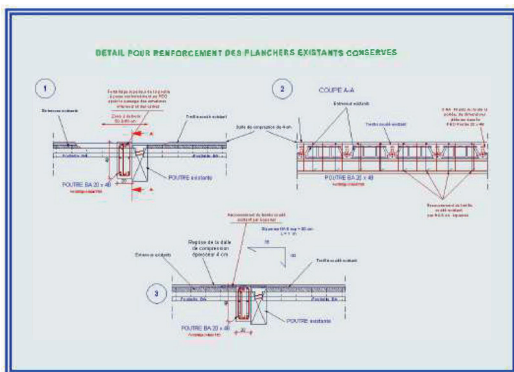
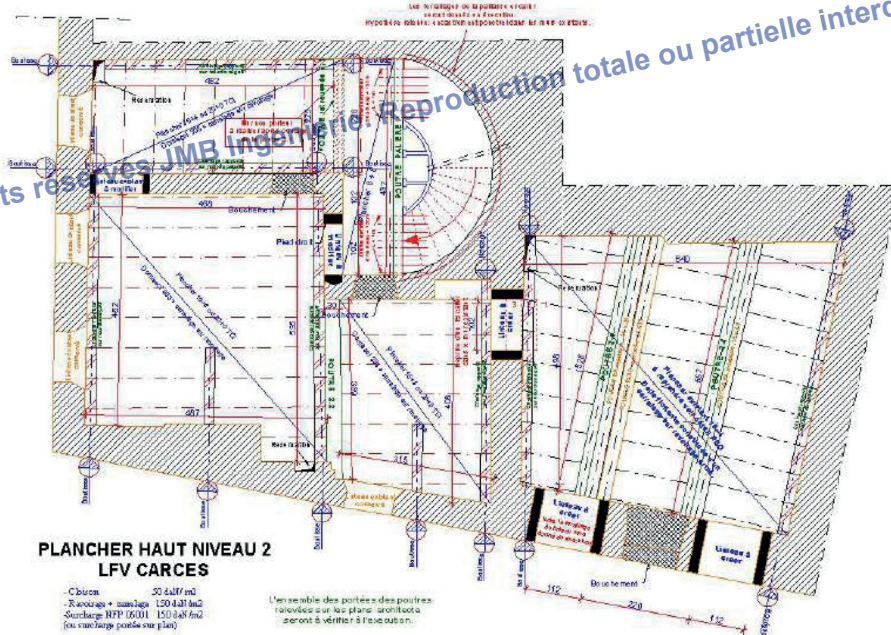
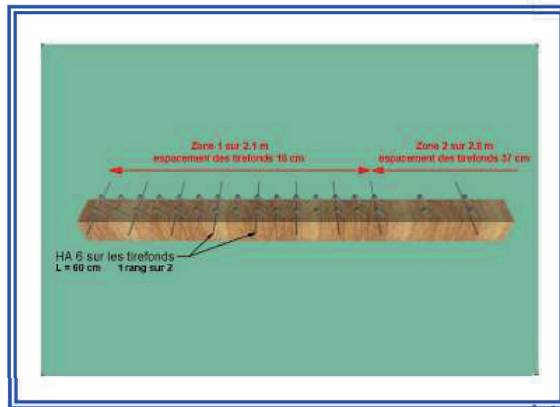
MAISON INDIVIDUELLE - COMMUNE DE ST MARTIN DE PALIÈRE



Tous droits réservés JMB Ingénierie. Reproduction totale ou partielle interdite loi du 11 mars 1957.

## LOGEMENTS & RÉHABILITATIONS (SUITE)

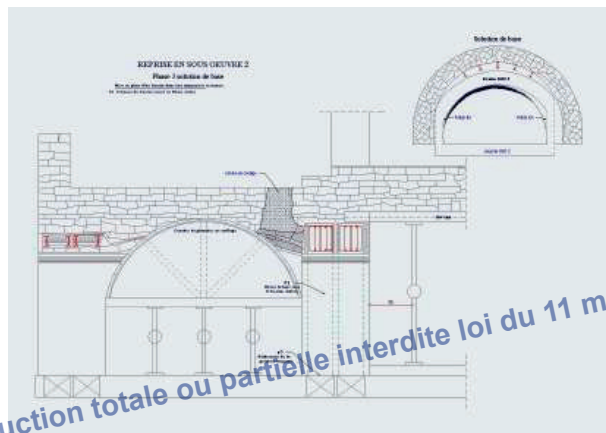
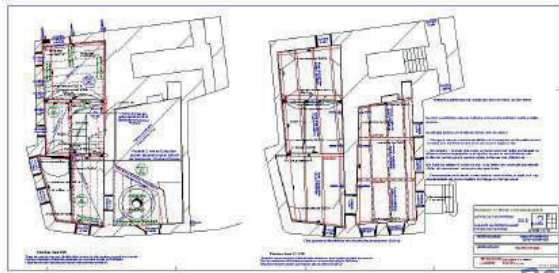
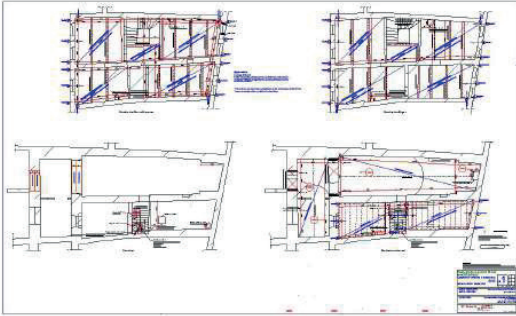
### LOGIS FAMILIAL VAROIS - 5 LOGEMENTS - COMMUNE DE CARCÈS



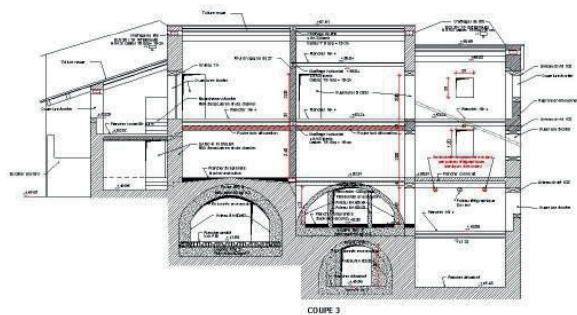
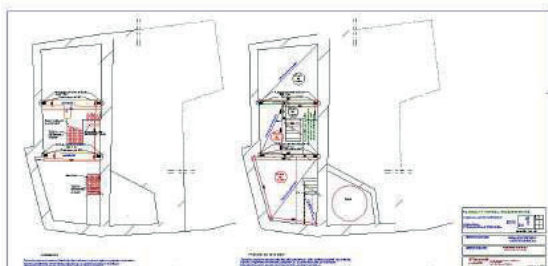
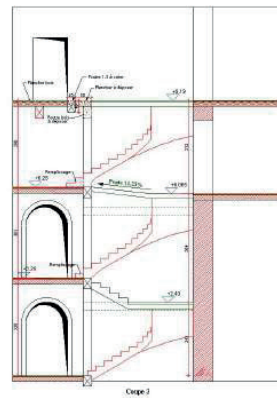
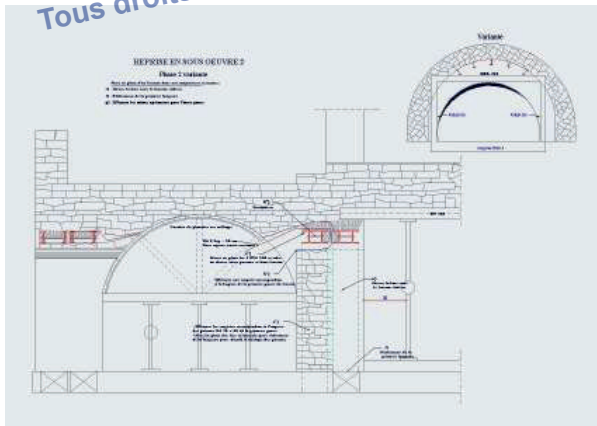


## LOGEMENTS & RÉHABILITATIONS (SUITE)

### MAIRIE DE FOX-AMPHOUX / MAIRIE DE MÉOUNES

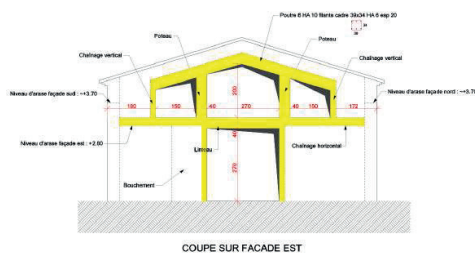
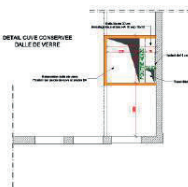
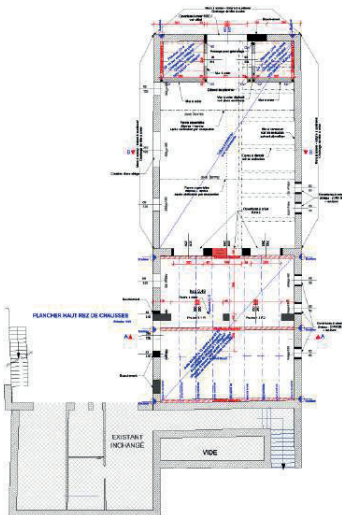
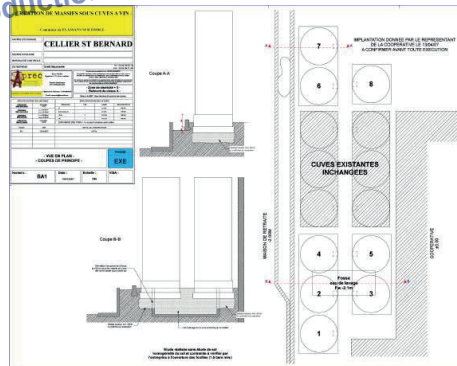
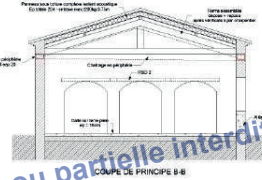
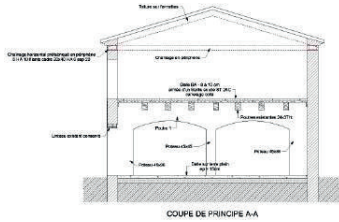
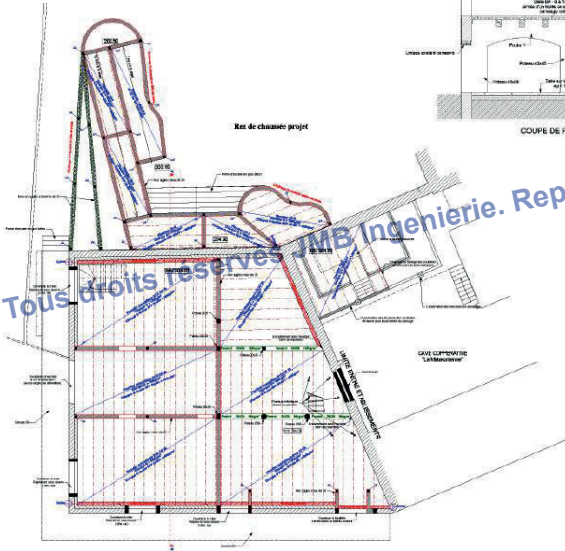
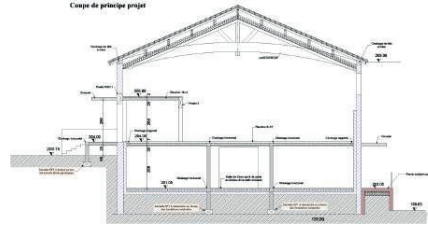
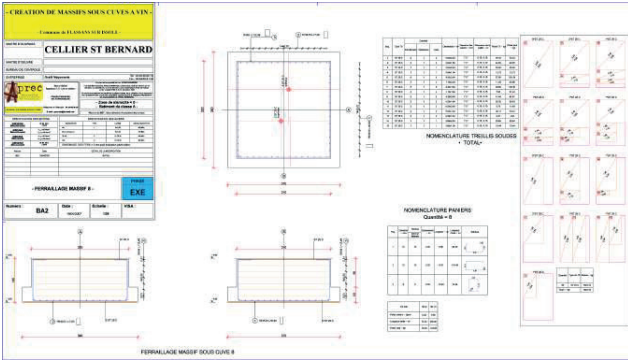


Tous droits réservés JMB Ingenierie. Reproduction totale ou partielle interdite loi du 11 mars 1957.



## LOGEMENTS & RÉHABILITATIONS (SUITE)

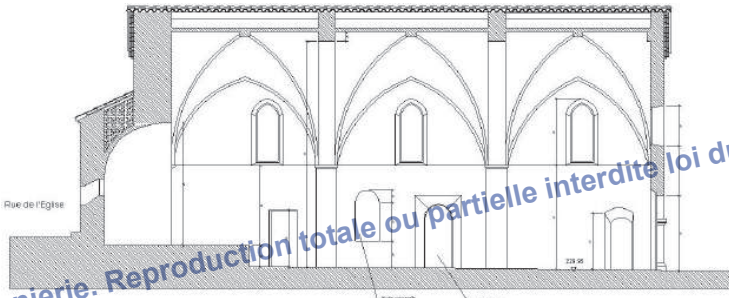
CAVES COOPERATIVES - RÉHABILITATIONS, AGRANDISSEMENTS, REMISES AUX NORMES... CABASSE, FLASSANS, CARCÈS...



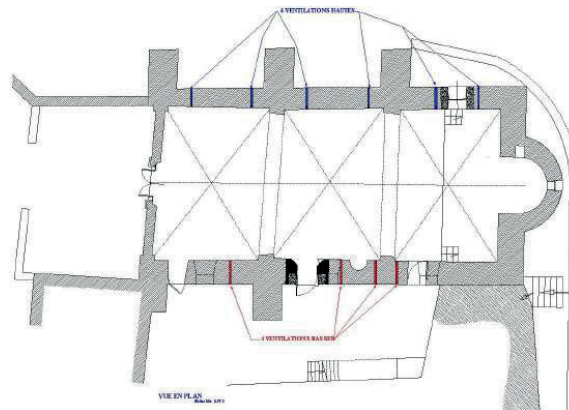
Tous droits réservés JMB Ingeierie. Reproduction totale ou partielle interdite loi du 11 mars 1957.

## LOGEMENTS & RÉHABILITATIONS (SUITE)

### ÉGLISE NOTRE DAME DES SALLES - PLASTIFICATION DES VOÛTES D'OGIVES - COMMUNE DE FLASSANS SUR ISSOLE



© JMB Ingénierie. Reproduction totale ou partielle interdite loi du 11 mars 1957.



#### PRINCIPE DE REPRISE DES VOÛTES D'OGIVES à réaliser une pierre sur trois



#### MODE OPERATOIRE

Travaux à effectuer sur l'ensemble des voûtes

Plats-forme destinés à composer par trévaux deux zones de planche.

Chargés assemblés et démontés compris l'ensemble de fixation et toutes opérations consécutives à ces travaux d'urgence.

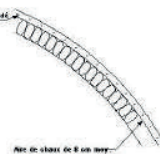
Déperçonnage des entre-voûtes et découpe de l'air de chaux existante.

Plastification progressive des voûtes et mise en tension par deux extrémités des parties inférieures à restaurer.

Continuement par la reconstruction d'une nouvelle armature de charnage en chaux de ciment sans aucun panneau de plâtre sous-jacent.

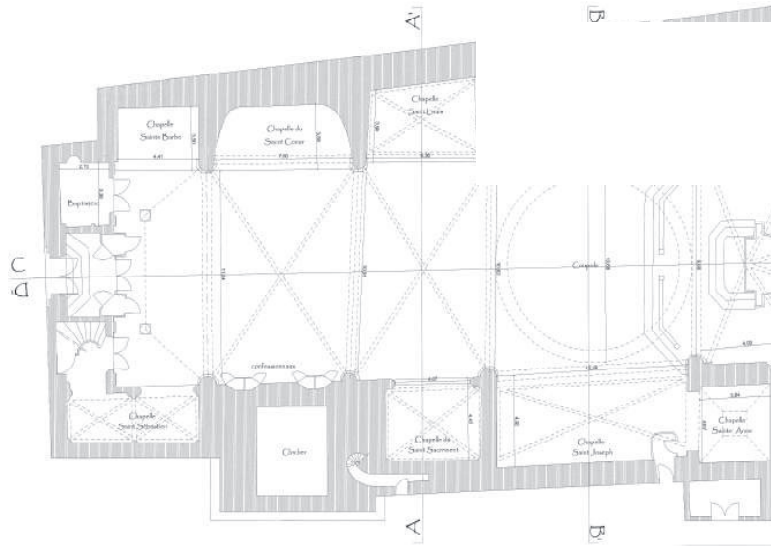
Retraitement avec soin dans la mesure des possibilités de voûtes et ajustement des joints et recroisements.

Anexes par feuille soust. pag. V.



## LOGEMENTS & RÉHABILITATIONS (SUITE)

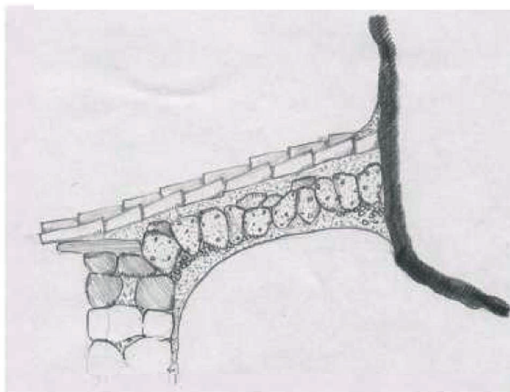
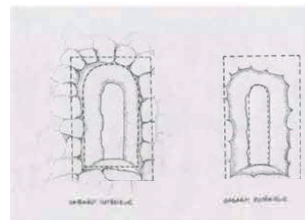
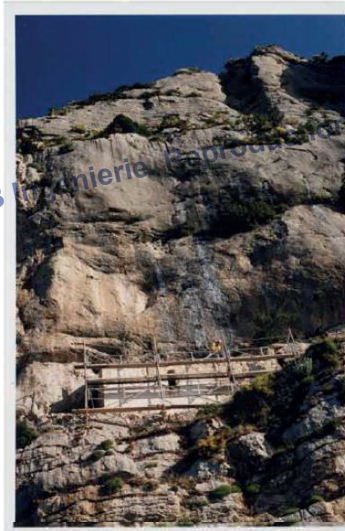
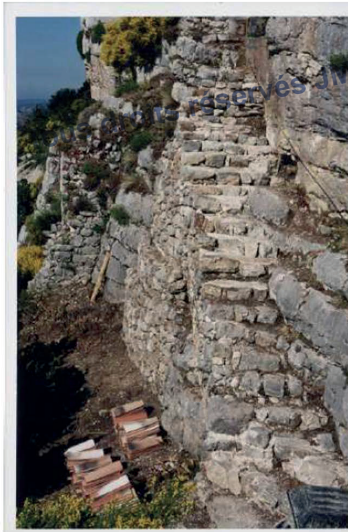
### ÉGLISE SAINT SAUVEUR - COMMUNE DE BRIGNOLES



Tous droits réservés JMB Ingénierie. Reproduction totale ou partielle interdite loi du 11 mars 1957.

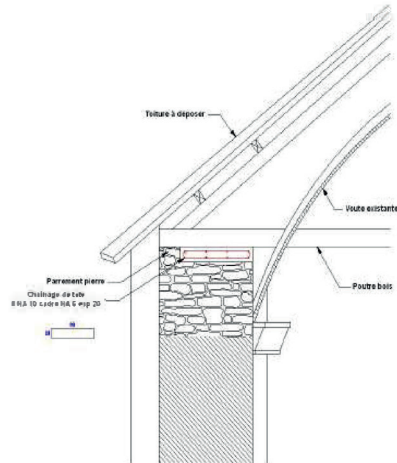
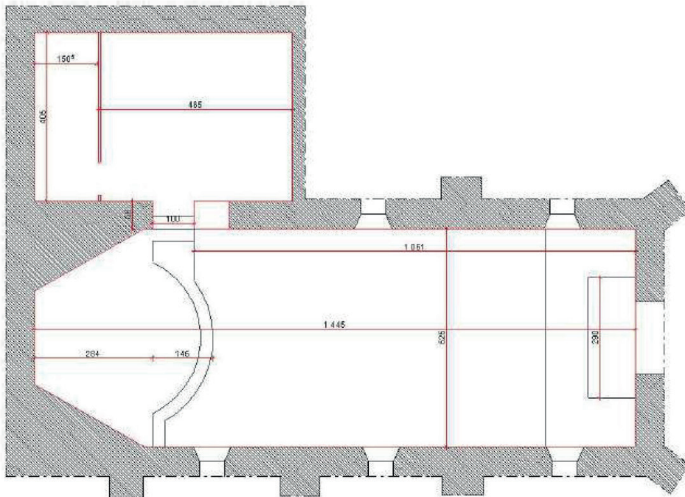
## LOGEMENTS & RÉHABILITATIONS (SUITE)

### CHAPELLE SAINT TROPHINE - COMMUNE DE ROBION

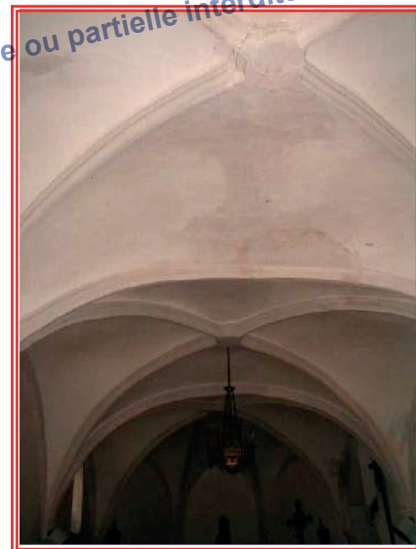


## LOGEMENTS & RÉHABILITATIONS (SUITE)

### CHAPELLE DE LA MISÉRICORDE - COMMUNE DE NANS LES PINS

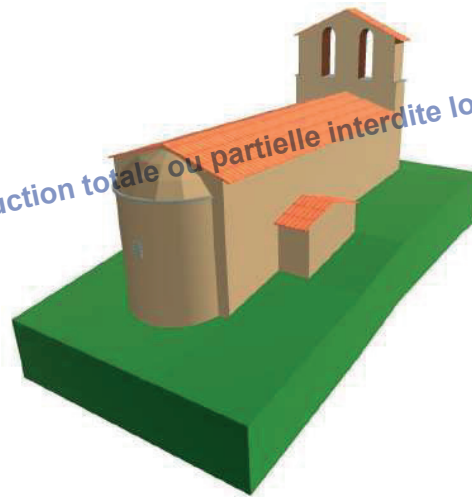
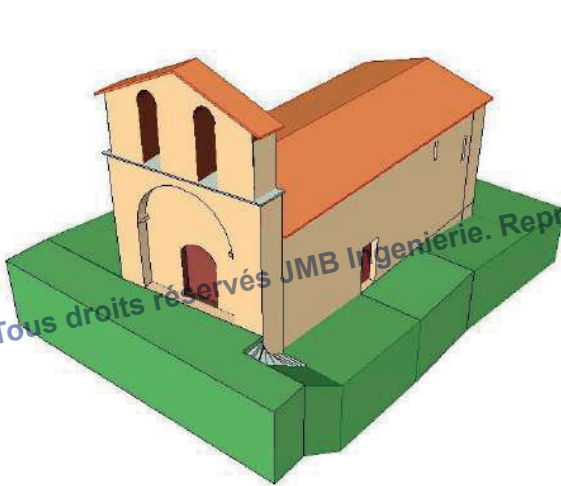


PRINCIPE DE POSE DU CHÂINAGE DE TÊTE

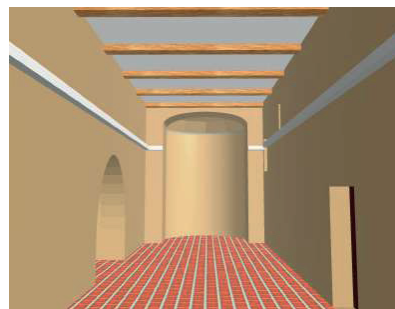
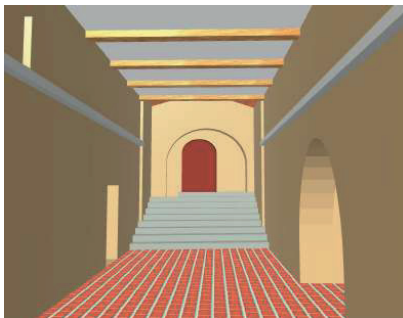


## LOGEMENTS & RÉHABILITATIONS (SUITE)

### CHAPELLE NOTRE DAME - COMMUNE DE MOISSAC BELLEVUE



Tous droits réservés JMB Ingénierie. Reproduction totale ou partielle interdite loi du 11 mars 1957.



## LOGEMENTS & RÉHABILITATIONS (SUITE)

CHAPELLE NOTRE DAME DE BUYEI MUSÉE DES ARTS ET TRADITIONS - COMMUNE DE GUILAUMES  
RENÉ DINKEL CONSERVATEUR DES MONUMENTS HISTORIQUES



*Relevé des Fissures*

